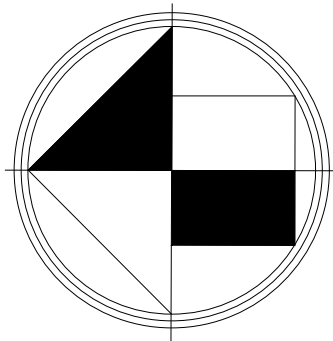
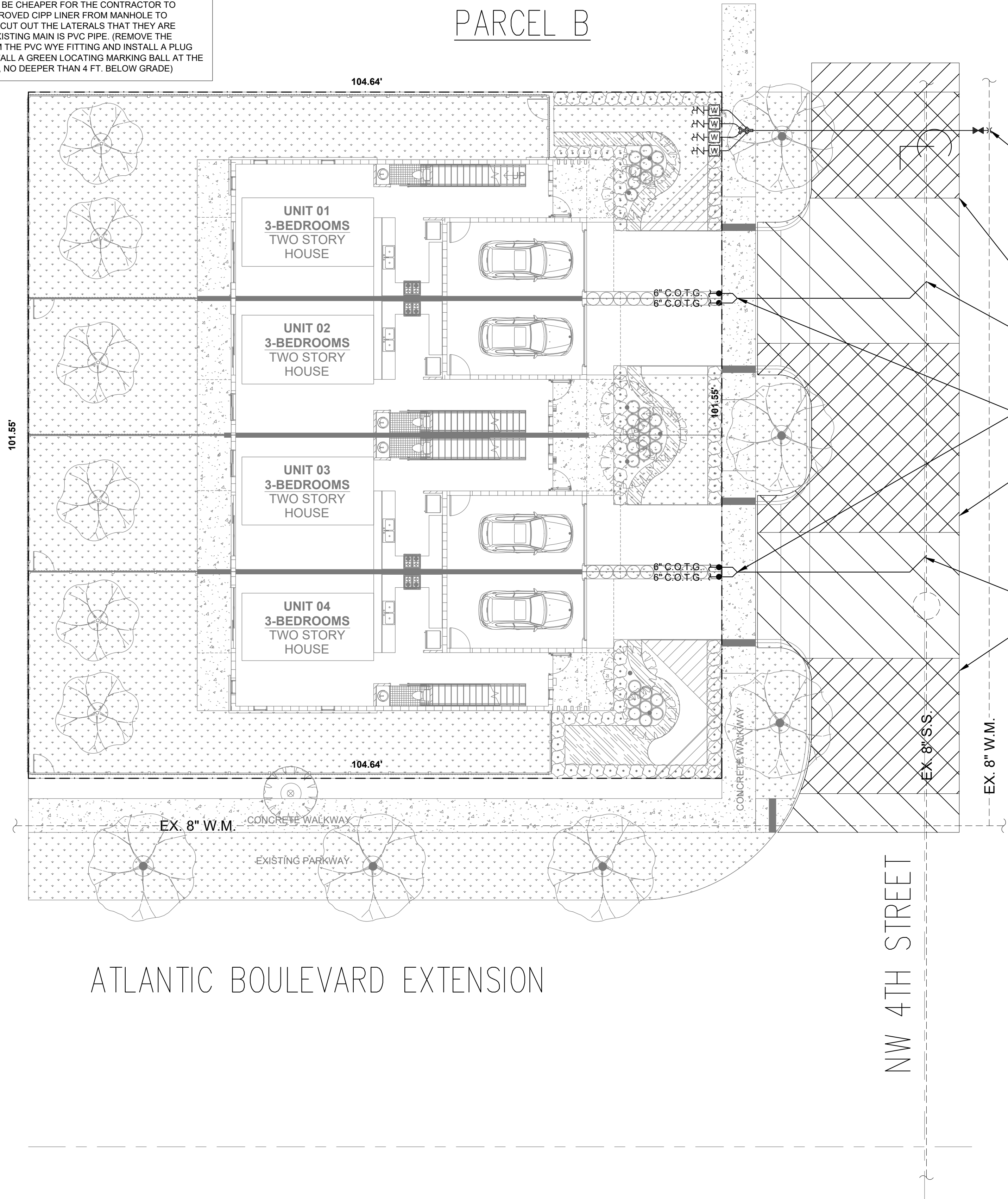
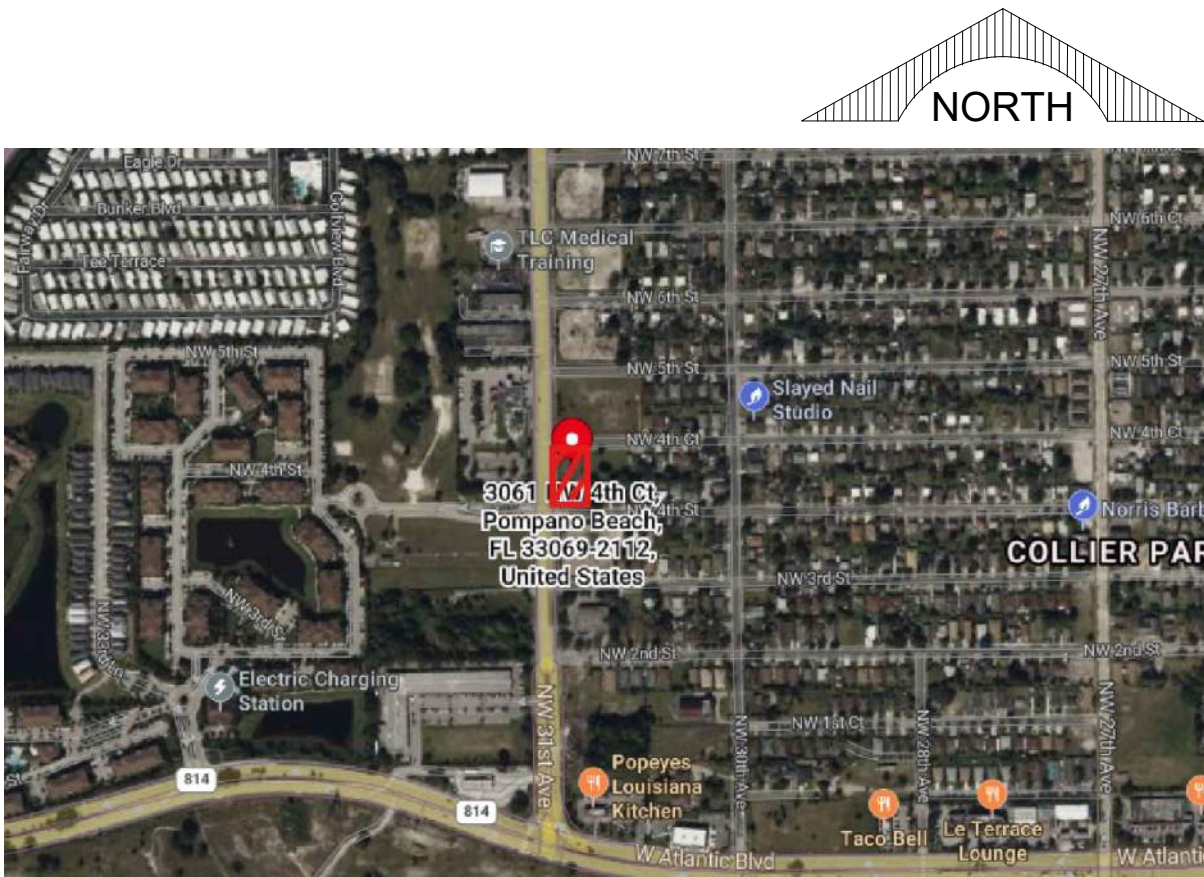


NOTE:  
ANY EXISTING WATER AND/OR SEWER CONNECTION TO THE SUBJECT LOTS NOT UTILIZED MUST BE CUT AND CAPPED AT THE WATER MAIN IF A WATER SERVICE AND CUT OUT AND SLEEVED IF A SEWER LATERAL. SEWER LATERALS THAT ARE CUT AND CAPPED WILL NEED TO BE AS-BUILT PER OUR ENGINEERING AS-BUILT STANDARDS. HOW TO RETIRE OLD LATERALS IF THE EXISTING MAIN IS CLAY PIPE AND HAS A CIPP LINER CURRENTLY INSTALLED. (INSTALL A SECTIONAL LINER IN THE MAIN OVER THE OLD LATERAL THUS ELIMINATING THE LATERAL) IF THE EXISTING MAIN IS CLAY PIPE, (DIG DOWN CUT OLD CLAY PIPE, SLEEVE BACK IN WITH PVC AND CITY APPROVED COUPLINGS) IF THE EXISTING MAIN IS CLAY PIPE AND YOU ARE REQUIRED TO RETIRE MULTIPLE LATERALS FOR A PROJECT. (IT MAY BE CHEAPER FOR THE CONTRACTOR TO INSTALL A CITY APPROVED CIPP LINER FROM MANHOLE TO MANHOLE AND NOT CUT OUT THE LATERALS THAT THEY ARE RETIRING) IF THE EXISTING MAIN IS PVC PIPE. (REMOVE THE LATERAL PIPE FROM THE PVC WYE FITTING AND INSTALL A PLUG INTO THE WYE. INSTALL A GREEN LOCATING MARKING BALL AT THE LATERAL LOCATING. NO DEEPER THAN 4 FT. BELOW GRADE)



0 10' 20'  
SCALE 1"=10'



LOCATION MAP  
N.T.S.

**LEGEND**

	PROPOSED WATER METER
	CLEAN OUT TO GRADE
	PAVEMENT RESTORATION
	MILL & RESURFACE PAVEMENT WITH 1.5" SP-9.5 AFTER PAVEMENT RESTORATION FOR PAVEMENT CUTS
	DOUBLE SEWER LATERAL
	SINGLE SEWER LATERAL
	EXISTING OR FUTURE UTILITIES
	W.M. WATER MAIN
	S.S. SANITARY SEWER MAIN
	S.S. SANITARY SEWER MAIN
	PROPOSED R.P.Z.
	PROPOSED TAPPING SADDLE
	PROPOSED GATE VALVE
	PROPERTY LINE

PROJECT NAME: REGANZANI TOWNHOMES (PARCEL B) POMPANO BEACH

WATER AND SEWER DEMAND CALCULATIONS

Date: 6/27/2025

The estimated flows were calculated using the Broward County WWS ERU Factors Equivalent Residential Unit Factors (ERU) for Single Family House (larger than 5/8" meter) Single Family House (larger than 5/8" meter): 250 GPD per Unit (Ref. Code C02)

ERU PER UNIT OF SFR(LARGER THAN 5/8" METER): EACH UNIT = 2.88  
AMOUNT OF UNITS. = 4

Total ERU = 4 X 2.88 = 11.52

	Demand	Units	Total
11.52 ERU	250	GPD	2880.0
Total Average Daily Flow			2880.0 GPD

Total Average Flow Per Hour 2880 /24 Hrs. = 120.00 GPH

Max. Flow Per Hour = 120 x 4.0 = 480.00 GPH

REVISIONS:
1.
2.
3.
4.
5.
6.
7.
8.

CLIENT:  
**LLR ARCHITECTS, INC.**  
9000 SHERIDAN STREET  
SUITE 158  
PEMBROKE PINES, FL, 33024

PROJECT:  
**REGANZANI TOWNHOMES**  
**POMPANO BEACH**  
**FLORIDA**  
TASK:  
**WATER AND SEWER PLAN**

**GGB Engineering**  
CIVIL AND FORENSIC ENGINEERS • LAND PLANNERS  
• CONSTRUCTION MANAGERS  
FLORIDA REGISTRATION No. 38256  
2699 Stirling Road, Suite C-202 Fort Lauderdale, Florida 33312  
Fax: (954) 986-6655  
Phone: (954) 986-9899

DATE: JUNE, 2025	SCALE: 1"=10'
DESIGNED BY: B.J.R.	DRAWN BY: A.R.

PROJECT NO.  
**25-0386**  
SHEET  
**C-003**

